



Anton Paar

EasyDens

Quick Guide

CONTENTS

1 REQUIRED EQUIPMENT

2 INSTALLATION

3 DEGASSING OPTIONS

4 FILLING & MEASUREMENT

5 CLEANING

1 REQUIRED EQUIPMENT



EasyDens



Smartphone



Sample



30 cm silicone
hose with
Luer adapter



Syringe 10 mL



Waste container

2 INSTALLATION

1



2



3



4



2 INSTALLATION

5



6



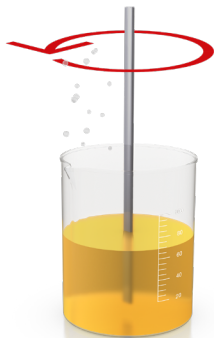
DOWNLOAD MANUAL



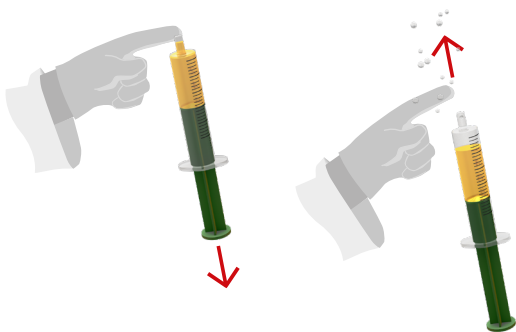
www.easydens.com

3 DEGASSING OPTIONS

1

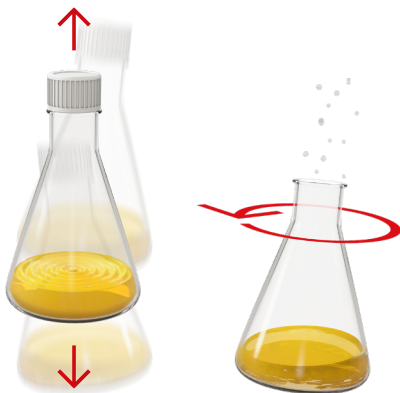


2



3 DEGASSING OPTIONS

3



1 min

4



Ultrasonic bath
5 – 10 min

4 FILLING & MEASUREMENT

1



2

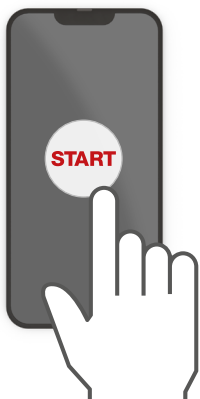


4 FILLING & MEASUREMENT

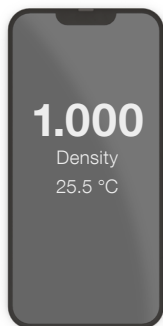
3



4



5



5 CLEANING

1



10 mL warm
bidistilled water



2



5 CLEANING

3



For suitable lab cleaner
please check the
instruction manual



© 2026 Anton Paar GmbH | All rights reserved.
Specifications subject to change without notice.
I01IB003EN-D

www.easydens.com